

Respect In Our Learning Community

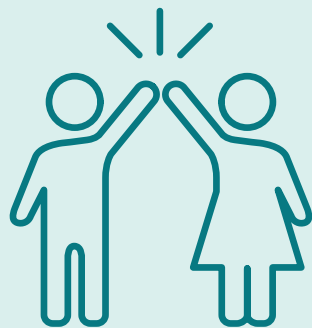
Schools, preschools, children's services and other education settings are places where all members of our community should feel safe.

We all share a responsibility to contribute to a respectful learning and working environment.

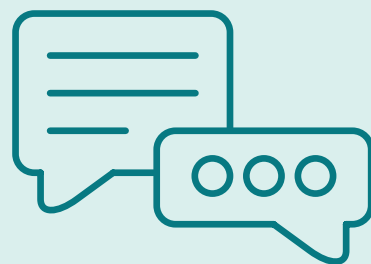
What we can all expect:



Mutual trust and respect



Collaboration and teamwork



Open, two-way communication



Respect for each other's time

What's not okay:



Using social media disrespectfully



Aggression or intimidation



Offensive, insulting or abusive language



Harassment, threats, or violence

It's up to all of us to work together to support children and young people by ensuring a safe learning environment and modelling respectful communication with others.

For more information, head to education.sa.gov.au/respectful-learning-environments or ask staff about expectations for working positively together.



Government
of South Australia

Department for Education